

# FOR LEASE

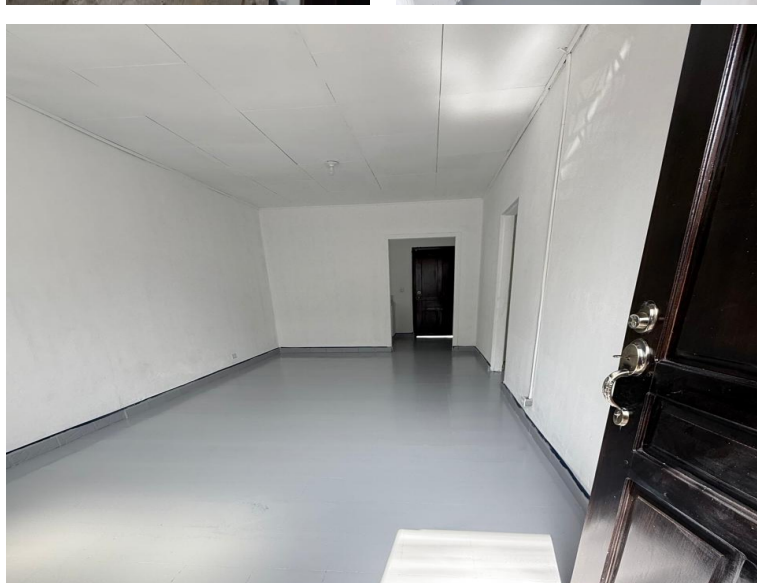
\$ 530.00 USD

Honduras - Cortes

San Pedro Sula

Listing ID: 002914037021

Put your brand where your customers see you every day. This strategic 65 m<sup>2</sup> retail space offers the perfect combination of location, visibility, and convenience to drive your business's growth. Benefits that make a difference: Additional land at the rear, for use as desired Strategic location in a central, high-traffic area. Just a few steps from La Roca supermarket, Milanesa bakery, and Asonhplafa, and surrounded by other established businesses. Front and indoor parking for your customers' convenience. Excellent visibility to strengthen your business's presence. Ideal spaces for offices, clinics, pharmacies, coffee shops, retail stores, beauty salons, service agencies, and much more. Your business deserves a location that works in your favor. Contact us today and schedule your visit. Discover the space where your company's next phase of growth will begin.



[SEE PROPERTY ON GOOGLE MAPS](#)



**IDALMY MURILLO**  
Sales Agent  
504 94436849  
[imurillo@remax-infinite-hn.com](mailto:imurillo@remax-infinite-hn.com)  
<https://www.remax-infinite-hn.com>



**RE/MAX INFINITE GROUP**

San Pedro Sula Area, San Pedro Sula Area, Honduras

Each office is independently owned and operated