

FOR SALE

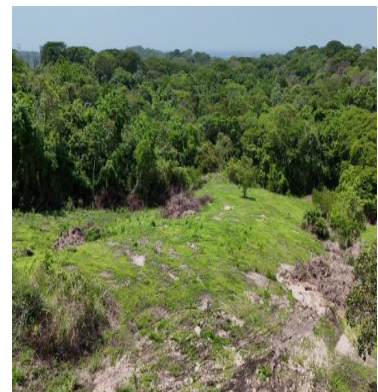
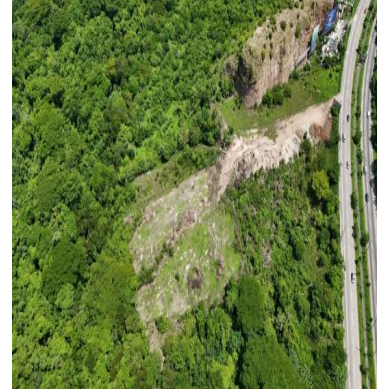
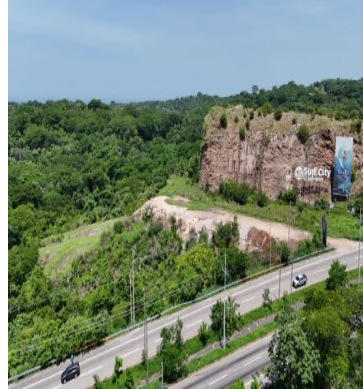
\$ 5,300,000.00 USD

El Salvador - La Paz

Olocuilta

Listing ID: 002283140051

A unique opportunity for industrial or commercial investment at a competitive price. 100 metres of frontage on the main motorway. If you're looking for a strategic location with access for heavy goods vehicles, this is for you. --- LOCATION Km 61, Comalapa Motorway Olocuilta district, La Paz --- LAND FEATURES - Total area: 6.53 manzanas (47,088.79 m²) or (67,375.96 v²) - 100 metres of frontage on the main road - Flat land spread across 2 terraces - Wide ramp designed for heavy goods vehicles - Direct access from the motorway --- PRICE \$79 v² or \$5,322,700.00 --- IDEAL USE - Industrial warehouses - Commercial projects - Industrial estate --- KEY ADVANTAGE Full visibility from the busiest motorway leading to the international airport. Immediate connectivity for freight and distribution operations.



[SEE PROPERTY ON GOOGLE MAPS](#)



ANDRE CIRIANNI
Sales Agent
503 78665303
andre@remaxcapital sv
<http://www.remaxcapital sv>



RE/MAX CAPITAL

Colonia Lomas de San Francisco, final calle #1 Centro de Negocios Manhattan, Antigua Cuscatlán, La Libertad.

Each office is independently owned and operated