

# FOR SALE

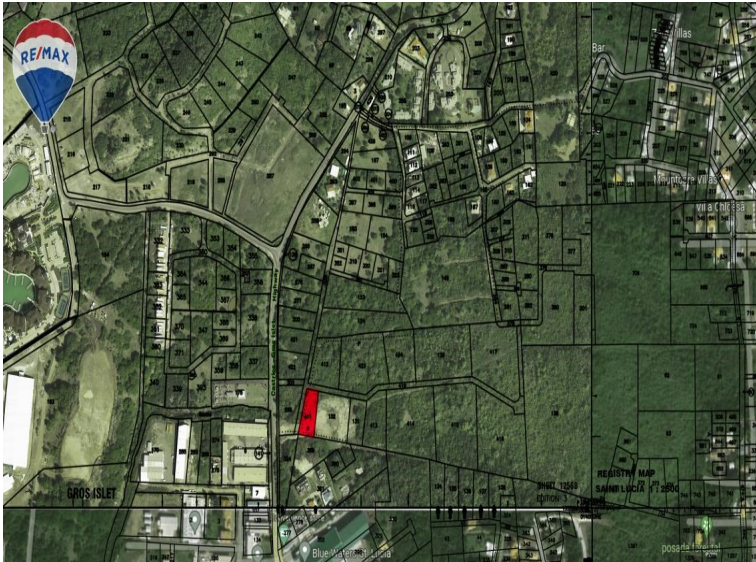
\$ 306,850.00 USD

Saint Lucia - Gros-Islet

Gros Islet

Listing ID: 500012017177

Are you in the market for the perfect location to make your dream home or start a business? If you're looking for convenience with easy access to the highway, beach, and industrial area, then consider owning a piece of land in the prestigious Belle-Vue Estate, just before Cap Estate. This land is conveniently located across from the Massade Industrial Estate, providing accessibility to various businesses and services, including KM2 Solutions, RAMCO Plastics, and other industries. You'll also have quick access to the Castries to Gros-Islet Highway, making your daily commute to work, school, or shopping a breeze. Furthermore, this land is close to Pigeon Island, a national landmark and popular tourist destination. You can enjoy the beauty of the Caribbean Sea, explore historical forts and ruins, relax on sandy beaches, swim in crystal-clear waters, and hike on nearby trails. One of the greatest advantages of this multipurpose land is its versatility. You can use it for commercial, industrial, or residential purposes. With a size of 18,411 square feet, you have the freedom to build whatever suits your needs, whet



SEE PROPERTY ON GOOGLE MAPS



LENIN VOLNEY

Sales Agent

758 4873629

[Lenin@GoldenAppleRealEstate.com](mailto:Lenin@GoldenAppleRealEstate.com)

<https://www.goldenapplerealestate.com/>



**RE/MAX GOLDEN APPLE**

Rodney Bay, Gros Islet, Saint Lucia

Each office is independently owned and operated