

FOR SALE

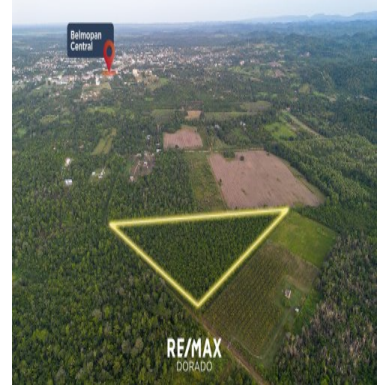
\$ 110,500.00 USD

Belize - Cayo District

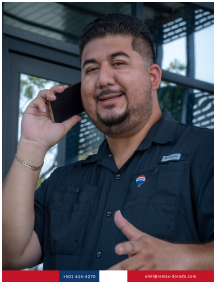
Camelote

Listing ID: 100102310033

Looking for a blank canvas to bring your dreams to life? Look no further! This virgin land offers endless possibilities, nestled in the heart of Belize's lush countryside. Key Features: Fertile Soil: This land boasts incredibly fertile soil, perfect for cultivating crops or starting your own farm. Versatile: With no existing structures, you have the freedom to shape this land to suit your needs. Whether you envision a family ranch estate, a thriving farm, or a recreational retreat, the possibilities are endless. Convenient Location: Situated less than 1.5 miles from the George Price Highway and only 4 miles from Belmopan, convenience meets tranquility. Enjoy easy access to city amenities while still relishing the peace and quiet of rural living. Value: Priced at just \$110,500 USD, this is an incredible opportunity at \$4,250 USD per acre. Don't miss out on this rare chance to own a piece of paradise! Contact us today to schedule a viewing and start turning your dreams into reality."



[SEE PROPERTY ON GOOGLE MAPS](#)



EMIL MONTERO

Sales Agent

501 6144270

emil@remax-dorado.com

<https://www.remax-dorado.com>



RE/MAX DORADO II

Belize City, Belize District, Belize

Each office is independently owned and operated