

FOR LEASE

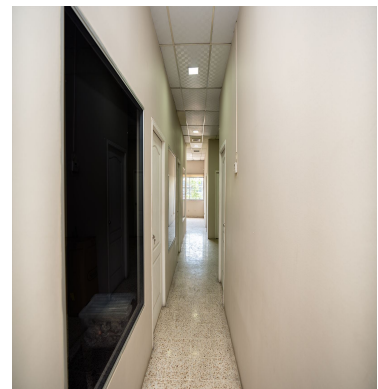
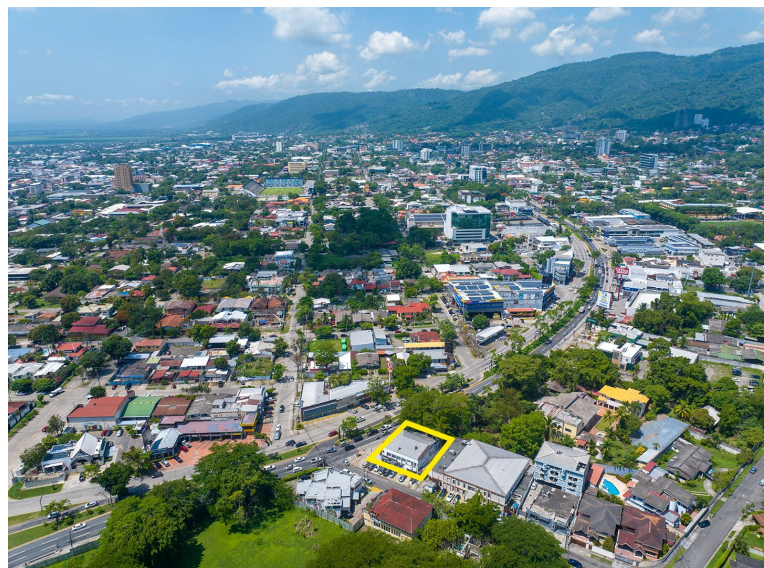
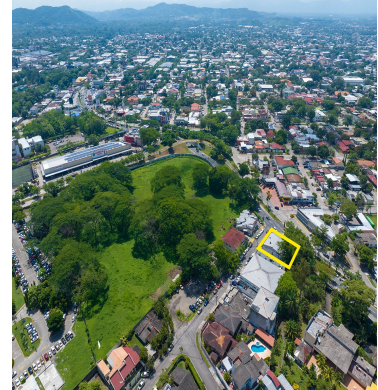
\$ 2,240.00 USD

Honduras - Cortes

San Pedro Sula

Listing ID: 002913938001

Commercial Space for Rent – Strategic Location on Circunvalación, San Pedro Sula This 160 m² commercial space is available for rent in one of the busiest and most high-value areas of San Pedro Sula. General Features: Total area: 160 m² Rental price: \$14 per m² (Total monthly rent: \$2,240) Location: Second floor of a corporate building, between 9th and 10th Street, Circunvalación Avenue Parking: 7 spaces included Interior layout: 7 private offices, all with air conditioning 1 spacious reception area 2 lounge areas, ideal for cubicles, coworking, or informal meeting spaces Internal kitchen Drywall partitions, allowing flexible reconfiguration of the space as needed Includes water cistern (activation can be requested) Fresh paint will be provided if the tenant prefers Surroundings and visibility: Located in a 2-story building. Second floor, next to Morales Group, above Zebra Fashion Boutique. Directly across from PriceWaterhouseCoopers (PWC). Highly commercial and business-oriented area. Ideal for: Companies, law or accounting firms, service agencies, coworking centers, c



[SEE PROPERTY ON GOOGLE MAPS](#)



LIDIA LOPEZ
Sales Agent
504 95181556
lilopez@remax-infinite-hn.com
<https://www.remax-infinite-hn.com>



RE/MAX INFINITE GROUP

San Pedro Sula Area, San Pedro Sula Area, Honduras

Each office is independently owned and operated