

# FOR LEASE

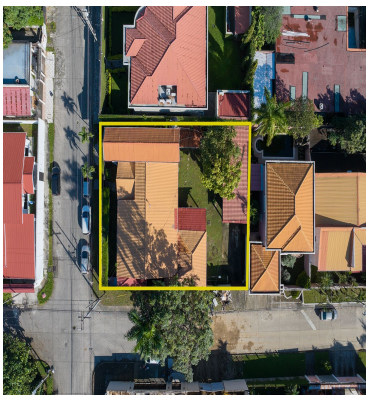
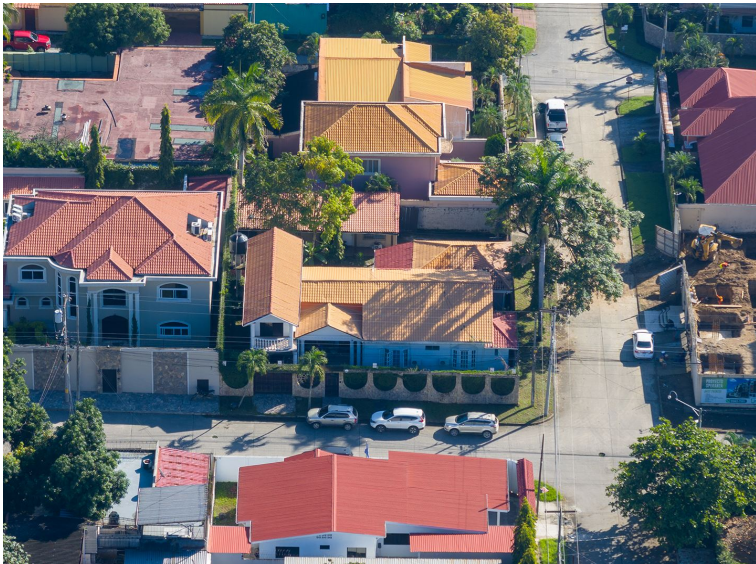
\$ 2,200.00 USD

Honduras - Cortes

San Pedro Sula

Listing ID: 002913450019

Introducing this spectacular single-level residence located in one of the most exclusive and high-value areas of the city. With approximately 400 m<sup>2</sup> of construction, this property perfectly blends functionality, style, and comfort—ideal for families or discerning investors. Key Features: 4 bedrooms, each with its own private bathroom Guest bathroom 2 spacious living rooms, perfect for entertaining or family relaxation Bright and spacious dining area Storage room for additional space Separate maid's quarters 2 external apartments (ideal for guests or rental income) Front parking for 2 vehicles Rear parking with capacity for 4 vehicles Large green area, perfect for children, pets, or outdoor events Located in a quiet, secure neighborhood with high demand and increasing value, this property is a solid investment and an exceptional place to call home. A smart investment in an unbeatable location. Schedule your visit today!



SEE PROPERTY ON GOOGLE MAPS



SILVIA ROMERO  
Sales Agent  
504 94991637  
sromero@remax-infinite-hn.com  
<https://www.remax-infinite-hn.com>



## RE/MAX INFINITE GROUP

San Pedro Sula Area, San Pedro Sula Area, Honduras

Each office is independently owned and operated