

FOR SALE

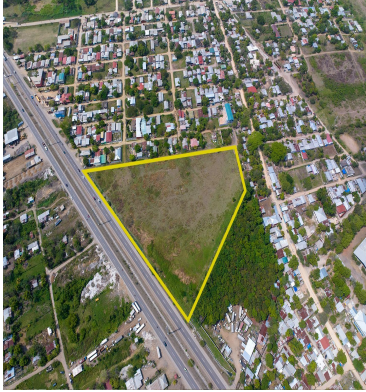
\$ 1,792,120.00 USD

Honduras - Cortes

Villanueva

Listing ID: 002913049012

Land for Sale with High Potential on Highway CA-5 – Villanueva, Cortés?? Strategic Location | 40,730.12 sq m We present an excellent investment opportunity in one of the sectors with the greatest growth projection in northern Honduras. This large 40,730.12 sq m lot, located directly on Highway CA-5 in Villanueva, enjoys extremely high vehicle exposure and unbeatable connectivity to San Pedro Sula, Tegucigalpa, and the rest of the national logistics corridor. ?? Highlighted Features: 100% Commercial and Industrial Location Large frontage on the main highway CA-5 Flat land ready for development Access to all public services Ideal for logistics centers, warehouses, free trade zones, retail, or mixed developments Area with rapid urban and industrial growth ?? Why invest here? Villanueva has established itself as one of the most dynamic areas in the Sula Valley. The combination of infrastructure, connectivity, and demand for commercial and industrial land makes this property a solid and profitable investment.



SEE PROPERTY ON GOOGLE MAPS



CESAR REYES
Sales Agent
504 94592570
creyes@remax-infinite-hn.com
<https://www.remax-infinite-hn.com>



RE/MAX INFINITE GROUP

San Pedro Sula Area, San Pedro Sula Area, Honduras

Each office is independently owned and operated