

# FOR SALE

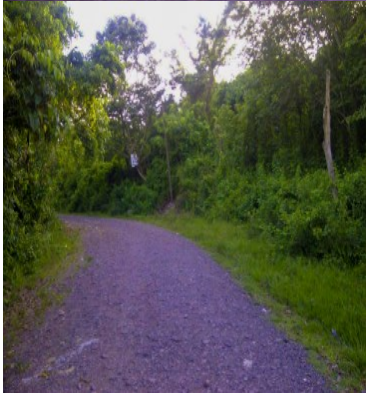
\$ 160,000.00 USD

Honduras - Cortes

Potreriillos

Listing ID: 002912913002

Investment in magnificent Land in Potrerillo, Cortés, Honduras In the heart of the municipality of Potrerillo, Cortés, lies a unique land property that represents an exceptional investment opportunity. This extensive plot of land, covering 279,520 square meters or 40 manzanas, offers flat and regular topography, ideal for a variety of purposes. Located in an elevated area of the municipality, this land is not affected by flood-related issues, ensuring the security of your investment. Its versatility is a highlight, being suitable for agriculture, livestock, urban or tourism projects. Access to groundwater at a depth of 60 feet facilitates agricultural development, while the availability of electricity and convenient property access make it an even more attractive investment. In terms of location, the property is just eight minutes away from the CA-5 highway, providing easy access to major transportation routes. Furthermore, it is 2.4 kilometers from the urban perimeter of Potrerillo and 37 kilometers from the city of San Pedro Sula, placing it in a strategic position for future growth. This pro



SEE PROPERTY ON GOOGLE MAPS



JOHN CASTRO  
Sales Agent  
504 33321669  
[jcastro@remax-infinite-hn.com](mailto:jcastro@remax-infinite-hn.com)  
[www.remax-infinite-hn.com](http://www.remax-infinite-hn.com)



## RE/MAX INFINITE GROUP

San Pedro Sula Area, San Pedro Sula Area, Honduras

Each office is independently owned and operated