

FOR SALE

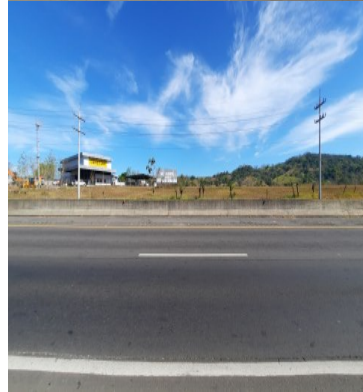
\$ 2,224,750.00 USD

Panama - Chiriquí

Chiriqui Montaña - Las Lomas

Listing ID: 002762479005

This spacious land plot in the community of Las Lomas, located on the outskirts of the City of David, next to the Inter-American Highway, is situated in one of the areas with the highest potential for residential growth due to its proximity to the city. Surrounded by established residential neighborhoods and ongoing construction projects, this property is ideal for meeting the current and growing demand for commercial developments such as hotels, shopping centers, plazas, industrial centers, hospitals, fuel stations, and more. The zoning classification for this land is C3, R2, which allows for both commercial and residential use. If you would like to learn more about this property, please do not hesitate to contact us. We would be happy to provide you with further information.



[SEE PROPERTY ON GOOGLE MAPS](#)



HARRY ALVARADO

Sales Agent

507 64860816

harry.alvarado@remax-highlands.net

www.remax-highlands.net



RE/MAX HIGHLANDS

Chiriqui Montaña, Chiriquí, Panama

Each office is independently owned and operated