

# FOR SALE

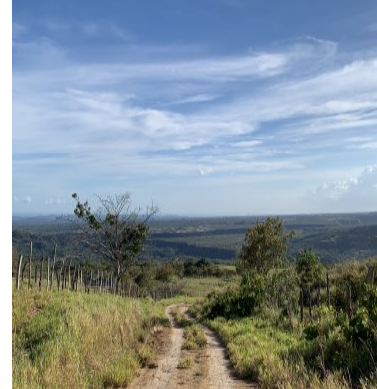
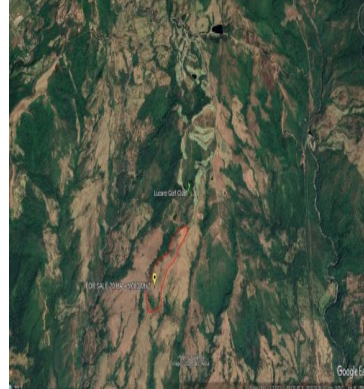
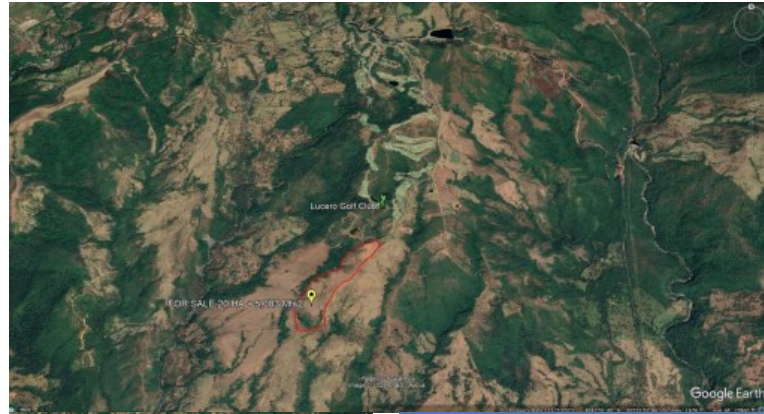
\$ 1,498,000.00 USD

Panama - Chiriquí

Chiriqui Montaña - Boquete

Listing ID: 002532323006

Nestled amidst the verdant landscapes of Caldera, District of Boquete in the Province of Chiriqui, lies a breathtaking 50-acre titled lot, awaiting the touch of your imagination! Prepare to be captivated by the stunning vistas of the Panamanian tropical highlands and picturesque islands of the Gulf of Chiriquí, along with the boundless possibilities that this prime real estate gem has to offer. This picturesque parcel of land boasts unrivaled tranquility and seclusion nestled within the country's most mountainous region, at 1,000 meters above sea level, yet it remains conveniently accessible. Just a 50-minute drive from the country's second-largest city, David, this location serves as the commercial and financial hub of the province. David is in a constant state of growth, with modernized infrastructure, including recently renovated hospitals staffed by US-trained doctors. Additionally, medical visits and prescriptions here are considerably more affordable than in North America. Serving as the international gateway is the Enrique Malek Airport, offering daily flights to Panama City. Both Air Pa



[SEE PROPERTY ON GOOGLE MAPS](#)

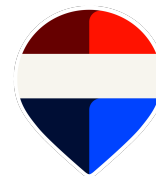


KAREN PANDO

Sales Agent

507 69868606

Karen.Pando@remax-legacy.net



**RE/MAX LEGACY**

Segundo Piso, Don Vidal, C. 4a Sur, Bajo Boquete, Provincia de Chiriquí, Panamá

Each office is independently owned and operated